

Emerald Floors Premier

Type A First Floor 3BHK Apartment Size 1650sq.ft

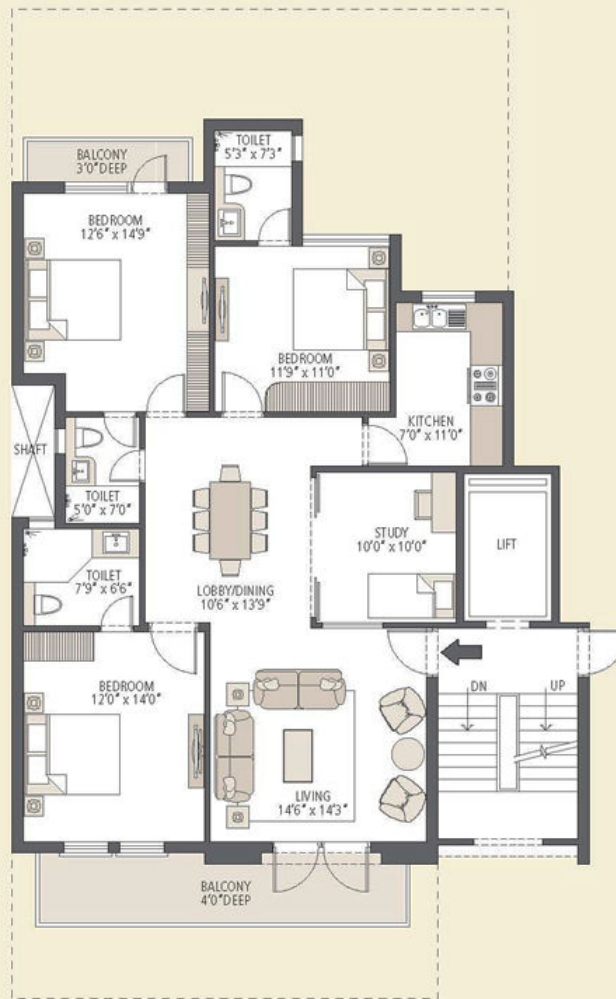
Type A - First Floor Plan (1650 sq. ft.)

3 Bedroom, 3 Bathroom, Study, S. Room (on Terrace),
and Elevator



Call Us !!

Harry : 9810 897 897
Mishu : 9871 133 440
Sarab : 9958 034 343
Manish: 9871 177 884
Surjit : 9650 588 334



1 sq. mtr. = 1.196 sq. yds. & 1 sq. mtr. = 10.76 sq. ft. In the interest of maintaining high standards, all floor plans, layout plans, areas, dimensions and specifications are indicative and are subject to change as decided by the company or by any competent authority. Soft furnishing, cupboards, furniture and gadgets are not part of the offering..

Type A - Terrace Floor Plan

Separate S. Room for all floors with a common Terrace



EMERALD FLOORS
Premier
 AT EMERALD HILLS



Call Us !!
Harry : 9810 897 897
Mishu : 9871 133 440
Sarab : 9958 034 343
Manish: 9871 177 884
Surjit : 9650 588 334

1 sq. mtr. = 1.196 sq. yds. & 1 sq. mtr. = 10.76 sq. ft. In the interest of maintaining high standards, all floor plans, layout plans, areas, dimensions and specifications are indicative and are subject to change as decided by the company or by any competent authority. Soft furnishing, cupboards, furniture and gadgets are not part of the offering.

Cost Break Up Emerald Premier Floors First Floor 3BHK Apartment Size 1650sq.ft

Area (sq.ft.)	1650
Floor	3BHK First Floor
BSP	4000
Inaugural Discount	251
Effective BSP	3749
Total BSP	6185850
EDC	396000
IDC	49500
Sale Price	6631350
Car Parking (Covered/Stilt)	250000
Club Membership	75000
PLC Select	1st Floor
150	247500
TOTAL COST (CONSTRUCTION LINKED)	7,203,850
Down Payment Rebate in %	12%
Down Payment Discount	733402
TOTAL COST (DOWN PAYMENT)	6,470,448
Booking Amount	500,000

Call Us !!
Harry : 9810 897 897
Mishu : 9871 133 440
Sarab : 9958 034 343
Manish: 9871 177 884
Surjit : 9650 588 334

Payment Plan Emerald Premier Floors First Floor 3BHK Apartment Size 1650sq.ft

Months	In%	Installments to be Paid	In%	INR
On Booking		Booking Amount		500000
Within 45 days of booking	20	of Sale Price less Booking Amount		826270
Within 90 days of booking	10	of Sale Price		663135
On start of construction	5	of Sale Price		331568
On completion of Ground floor roof slab	5	of Sale Price + Cost of Parking Slot	50	456568
On completion of 1st floor roof slab	5	of Sale Price + Cost of Parking Slot	50	456568
On completion of 2nd floor roof slab	7.5	of Sale Price + PLC if applicable	50	621101
On completion of 3rd floor roof slab	7.5	of Sale Price + PLC if applicable	50	621101
On completion of Top floor roof slab	7.5	of Sale Price + Club Membership	50	534851
On completion of Plumbing & Wall Conducting	7.5	of Sale Price + Club Membership	50	534851
On completion of external plaster	10	of Sale Price		663135
On completion of Internal Flooring and wall painting	10	of Sale Price		663135
On intimation for possession	5	of Sale Price		331568
	100	Total Cost(Excluding Stamp Duty & any other charges)		7203850

Down payment Plan Emerald Premier Floors First Floor 3BHK Apartment Size 1650sq.ft

Description	In %	Installments to be Paid	INR
On Booking		Booking Amount	500000
Within 45 days of Booking	95	of Sale Price less Booking Amount + 95% PLC if applicable + Cost of Parking Slot(s) less Down Payment Rebate	5551506
On Intimation for Possession	5	of Sale Price & PLC + Club Membership	418943
	100	GROSS PROJECTED TOTAL (Excluding Stamp Duty & any other charges)	6470448

Notes :

- In the above stated Sale Price, External Development Charges (EDC) and Infrastructure Development Charges (IDC) are pro-rated per unit as applicable to this Group Housing site.
- In case of any upward revision in future by the Govt. agencies, the same would be recovered on pro-rata basis from the Applicant/Allottee.
- Interest Free Maintenance Security (IFMS) - As applicable.
- Stamp Duty/registration charges shall be payable along with the last installment based on prevailing rates.
- One (Covered/Stilt) Car Parking bays for per apartment is mandatory.
- Prices subject to revision at the sole discretion of the company.
- PLC's as applicable- Corner - Rs. 75/- per sq. ft., Green Facing - Rs. 200/- per sq. ft., Pent House - Rs. 200/- per sq. ft., Pool Facing - Rs. 50/- per sq. ft..
- Sale Price = (Basic Price + EDC + IDC) x Area of the Apartment.
- Club Membership: Rs. 75,000/- (mandatory).
- Stamp Duty /registration charges shall be payable along with the last installment based on prevailing rates