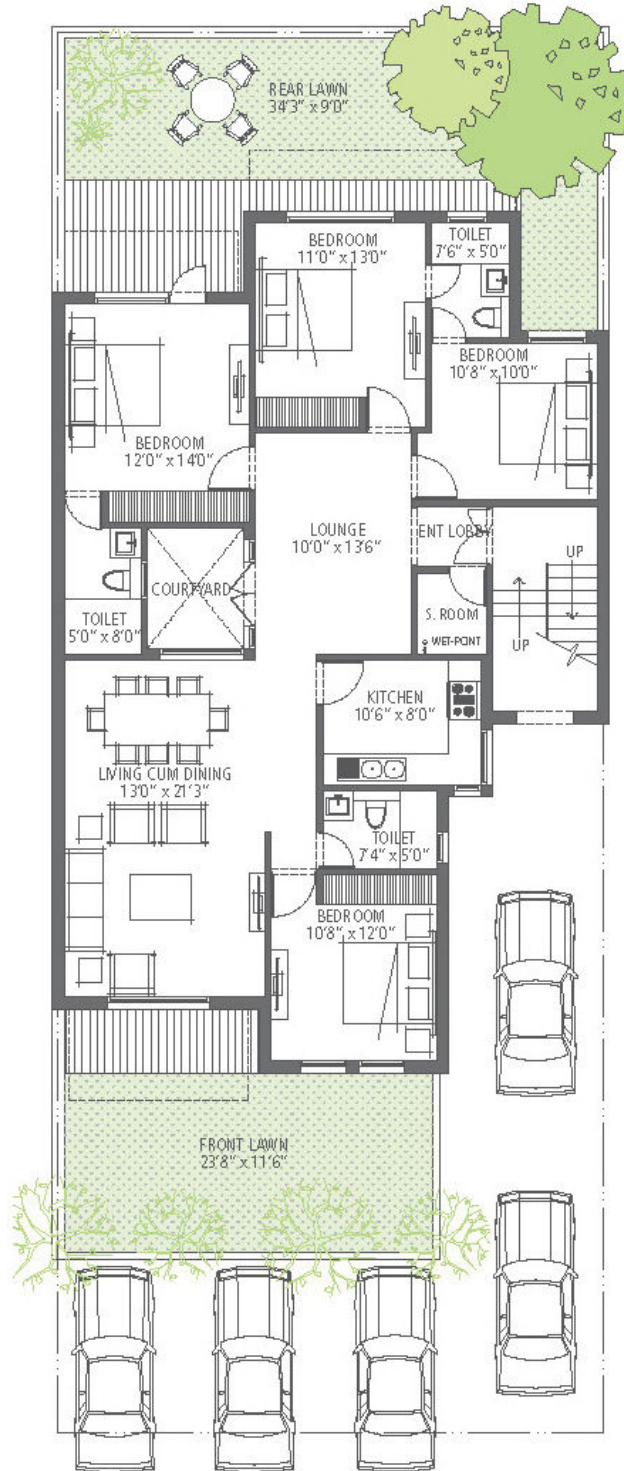


Channel Partners for Sale

350 sq. yds. (Type D)
4 Bedroom, 3 Bathroom and S. Room



EMERALD FLOORS
AT EMERALD HILLS



Ground Floor Plan

Emerald Floors Cost Break Up 4BHK Ground Floor Plot Size 350 sq. yards

PRICES	INR
Plot Size sq. yd.	350
Super Built Up Area sq.ft.	1750
Additional Area Lawn/ Terrace	672
Floor	Ground Floor
BSP	7400000
Sale Price	7700000
EDC & IDC	300000
Booking Amount	500000
Down Payment Discount	843600
Total COST (Down Payment Plan)	6856400
TOTAL COST (Construction Linked)	77,00,000

Payment Plan 4BHK Ground Floor Plot Size 350 sq. yards

Months	In %	Installments to be Paid	Amount
On Booking		Booking Amount	500000
Within 30 Days of Booking	10	% of Sale Price less booking amount	270000
Within 60 days of booking & issue of agreement	10	% of Sale Price	770000
Within 90 days of booking & start of External Infrastructure Development (Township Development)	10	% of Sale Price	770000
On Start of Unit Construction	10	% of Sale Price	770000
On Casting of Ground Floor	10	% of Sale Price	770000
On Casting of 2nd Floor	10	% of Sale Price	770000
On Completion of Brickwork & internal Plastering	10	% of Sale Price	770000
On Completion of Internal Electrical Conducting & Plumbing	10	% of Sale Price	770000
On Completion of Internal Flooring	7.5	% of Sale Price	577500
On Completion of External Flooring	7.5	% of Sale Price	577500
On Intimation of Possession	5	% of Sale Price + IFMS(Stamp Duty & Registration) + Club Membership	385000
	100	Total Cost (Excluding Registration Charges + IFMS + Club Membership + any other applicable charges)	77,00,000

Down Payment Plan 4BHK Ground Floor Plot Size 350 sq. yards

STAGES	In %	To be Paid	Amount
On Booking		Booking Amount	500000
Within 45 Days of Booking	95	% of Sale Price less booking amount less Down payment	5971400
On Intimation of Possession	5	% of Sale Price + IFMS(Stamp Duty & Registration) + Club Membership	385000
	100	Total Cost (Excluding Registration Charges + IFMS + Club Membership + any other applicable charges)	6856400

Notes:-Plot Size - 350sq.yards : 4 Bedroom + 3 Toilets + Family Lounge + SQ

- 1- 1st and 2nd Floor : 1 car park cost included in BSP
- 2- Ground Floor : 2 car park cost included in BSP
- 3- Optional Up Grade Package: Split Air conditioner -1 in each room + Modular Kitchen with Chimney & Hob = 4 Lacs
- 4- Down Payment rebate - 12% on 95% of BSP + PLC
- 5- IFMS/Club Membership: Extra as applicable
- 6- Price subject to revision without any notice
- 7- Additional Car Parking Charges : Rs.1.5 Lakh per bay (Subject to availability)
- 8- PLC :- 5% each (Applicable on corner, Green Facing and Major Road)
- 9- EDC & IDC rates are approximate (In case of any revision by the Govt. Agencies, the same (and arrears, if any) will be applicable on a pro-rata basis.
10. Stamp Duty, Registration Charges and the IFMS is payable based on prevailing rates.
- 11.Club Membership would be available to residents at preferential rates

*PLC Extra as Applicable